



Inside:

- Dot Day is coming!
- Summer Reading Program ends – stay tuned for our winter reading program
- Overheard at the library
- Library news



One little card, endless possibilities

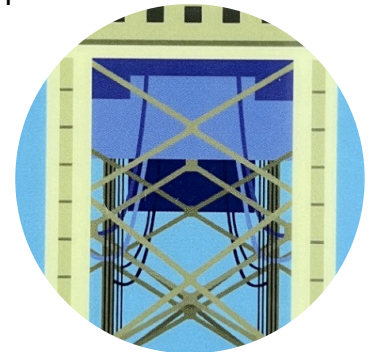
A PLDL library card is a doorway to the world

We at PLDL deeply appreciate our patrons – the staff here are patrons too! – and we're taking extra steps to show that appreciation this month.



The American Library Association recognizes September as Library Card Sign-up Month, so it's an especially good time for anyone thinking about getting their card to come on in.

The PLDL Friends of the Library have a number of surprises planned for patrons old and new.



About PLDL

We have approximately **47,287** items available for checkout at the library

We added **3,649** items during the last fiscal year (July 1, 2024 - June 30, 2025)

During that same time period,

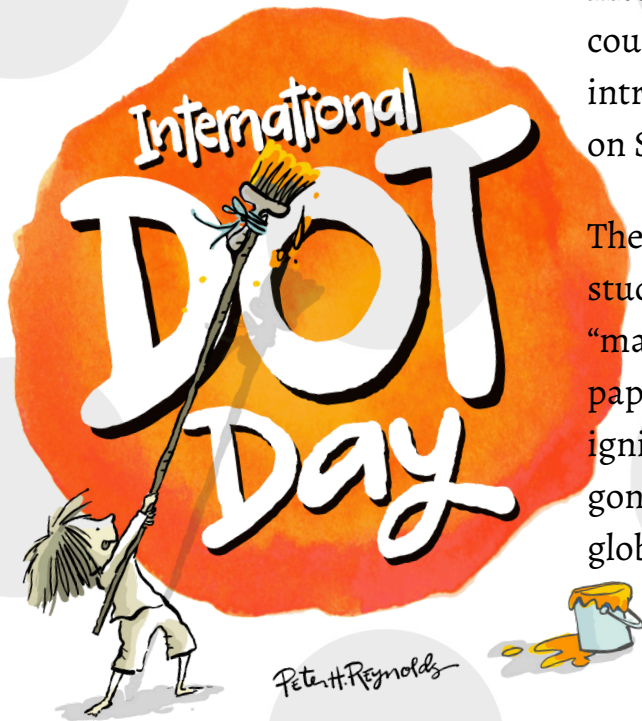
- patrons checked out more than **80,000** materials, and that's not counting our Inter-Library Loans!
- Through ILL, we **lent 6,961** items and **borrowed 7,029**.
- **714** new patrons signed up for cards



PLDL has six different library card designs - in the bubbles on this page - all by artist Chris Schmidt of Studio 13 in Houghton

September 17, 18 is our celebration of DOT DAY!!

**Come be creative with us during Preschool Story Time!
Wednesday at 10:30 am, Thursday at 1:30 pm**



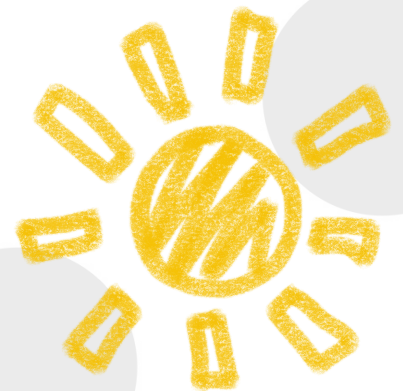
International Dot Day, a global celebration of creativity, courage and collaboration, began when teacher Terry Shay introduced his classroom to Peter H. Reynolds' book *The Dot* on September 15, 2009.

The Dot is the story of a caring teacher who dares a doubting student to trust in her own abilities by being brave enough to "make her mark." What begins with a small dot on a piece of paper becomes a breakthrough in confidence and courage, igniting a journey of self-discovery and sharing, which has gone on to inspire countless children and adults around the globe.

From internationaldotday.org

COLOR OUR WORLD™

Summer Reading Program has ended! 333 patrons participated with many joining us in a celebration that included ice cream sundaes.



Winter Reading Program will be announced in early 2026

Overheard at the library

A patron told us that **when his young son got his first library card** many years ago, the librarian handed the child his card when the application process was complete. The little boy took a long look at his new card and exclaimed, "Now I can rule the world!"

We love how access to the library empowers people 😊

From a delightful toddler getting ready to find more books to check out – "Wait a minute. Wait a minute. I have another question."

With a smile, we answered, "Okay, what's your question?" He asked, "Do you have anymore special books for me to check out?"

We sure do!

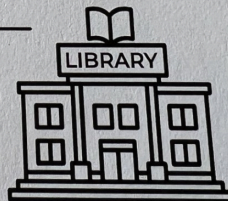
Submitted by patrons

A longtime patron was checking out books when, during the check-out process he said, "We love coming here – it's the friendliest place in town."

I LOVE MY LIBRARY BECAUSE...

I can come to it
and not have to
sit in my moms
office and I love
reading

NAME: _____

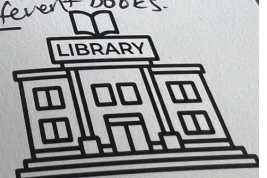


I LOVE MY LIBRARY BECAUSE...

My kids and I love to
read! We read everyday
and they love coming here.
There is always such
a great variety & selection
and I try to have them
explore new different books.

Thank you ♥

NAME: _____



Library News

Friends of the Library meeting

Tuesday, September 9 - 6:30 p.m. in the library community room

PLDL Board meeting

Wednesday, September 24 - 7 p.m. in the library community room. The public is welcome to attend.

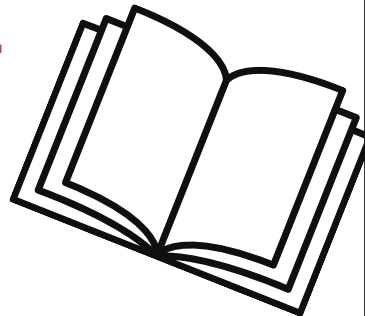
The YA section is reserved for young adults

- Everyone is welcome to look for books to check out in the Young Adult section of the library, however, chairs and tables are reserved as a safe space for teens and young adults.


But we haven't forgotten the non-young adults! There are multiple tables, cubbies, and private study rooms. To reserve a study room, check in, just at the circulation desk.



Friends of PLDL celebrate Library Card Sign-Up month



There will be drawings for gift cards from Biggby Coffee, Walmart, and Prickly Pine Cafe throughout September for all new library card holders



**The library
will open at
1 p.m. on
Tuesday,
September
9 for staff
training.**



906-482-4570



www.pldl.org



58 Huron St, Houghton, MI 49931



Monday – Thursday | 10am – 8pm
Friday | 10am – 5pm
Saturday | 10am – 3pm

S e p t e m b e r

/ 2 0 2 5

MONDAY

1 Library will be closed



8

TUESDAY

2 Chess Club
@ 4:00pm



9 Staff Training day
Open at 1:00 pm

Chess Club
@ 4:00pm



10 Storytime
@ 10:30 am

15



22

23

Chess Club
@ 4:00pm

Teen's Art Club
@ 4:00pm

24

Storytime
@ 10:30 am

PLDL Board of Trustees
@ 7:00 pm

THURSDAY

4 Storytime
@ 1:30 pm

11 Storytime
@ 1:30 pm

18 Storytime
@ 1:30 pm

25

Storytime
@ 1:30 pm

FRIDAY

5

12

19

26

SATURDAY

6 BASIC
@10:00 am

13

Legal Help: Drop-in
Hours @12:00 pm

The Tech Tutor
(TBA)

20

Craft Circle
@11:00 am

27



LEGAL HELP: DROP-IN HOURS

TRACEY VISITS ONCE A MONTH TO PROVIDE GUIDANCE
ON:
HOW TO FILL OUT LEGAL DOCUMENTS
WHERE TO GO FOR LEGAL QUESTIONS



SEPTEMBER 13
OCTOBER 11
NOVEMBER 8
DECEMBER 3

PROBATE REGISTRAR FAMILY COURT ADMINISTRATOR
ADOPTION SUPERVISOR

TRACEY L. BEAUCHAMP

12:00 PM - 2:00 PM

DISCLAIMER: THIS SERVICE OFFERS GENERAL GUIDANCE ONLY AND DOES
NOT PROVIDE LEGAL ADVICE OR REPRESENTATION.

